

GEOGRAPHY ADMISSIONS ASSESSMENT

D565/12

Wednesday 2 November 2016

40 minutes

* 3 0 3 9 5 0 6 5 9 2 *

SECTION 2

Candidate number	G						Centre number						
------------------	---	--	--	--	--	--	---------------	--	--	--	--	--	--

	d	d		m	m		y	y	y	y
Date of birth			-			-				

First name(s)	
---------------	--

Surname / Family name	
-----------------------	--

INSTRUCTIONS TO CANDIDATES

Please read these instructions carefully, but do not open the question paper until you are told that you may do so. This paper is Section 2 of 2.

This question paper requires you to analyse some data and complete a related task.

You should write your answer in the space provided in this question paper. Please complete this section in **black pen**.

You can use the blank inside front and back covers for rough working or notes, but no extra paper is allowed. Only answers in the space indicated in the paper will be marked.

Dictionaries and calculators may NOT be used.

Please wait to be told you may begin before turning this page.

This question paper consists of 10 printed pages and 2 blank pages.

This page is intentionally left blank for your rough working or notes.

Look at the task below and then write your answer in the space provided in this booklet.

TASK

The accompanying graph is plotted using data from the World Bank for eight countries around the world. The graph shows carbon dioxide (CO₂) emissions per capita, that is to say per head of population. To give some context concerning changes in population in those countries, an additional table shows total population at ten year intervals.

With reference to the data shown in the graph and the table, write a short essay exploring the variations in CO₂ emissions that you observe.

Figure 1: CO₂ emissions per capita (metric tons)

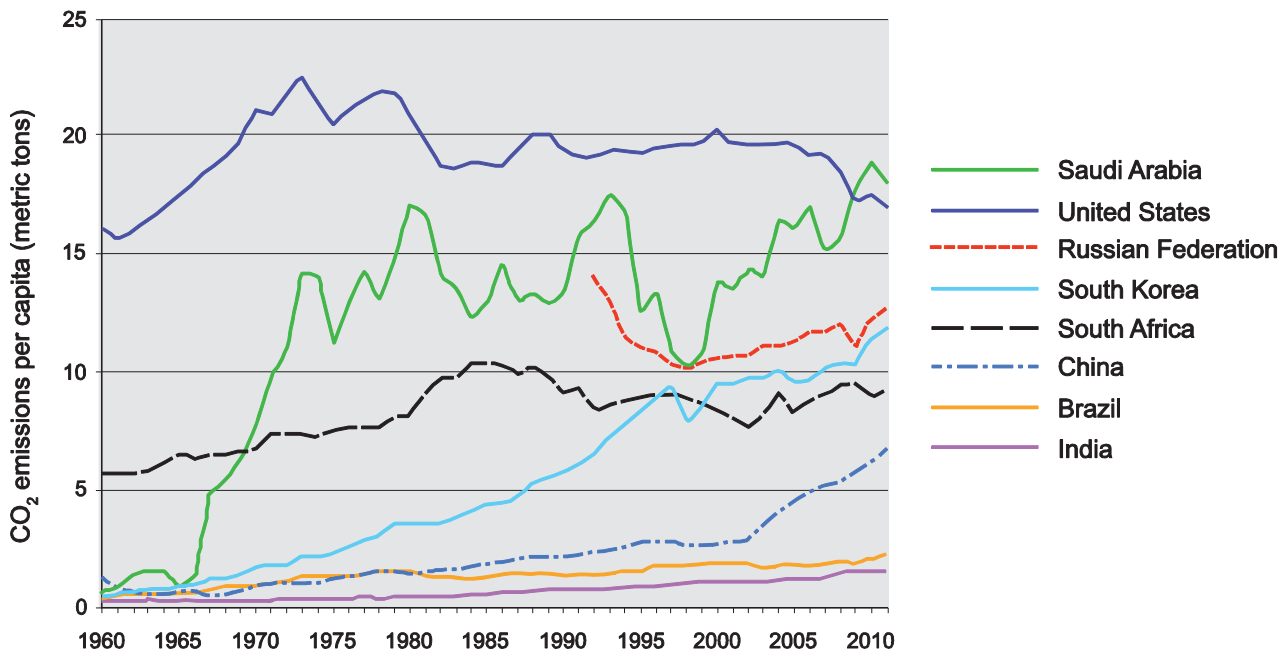


Table 1: Population total (millions)

	1960	1970	1980	1990	2000	2010
Saudi Arabia	4	6	10	16	21	28
United States	181	205	227	250	282	309
Russian Federation	120	130	139	148	147	143
South Korea	25	32	38	43	47	49
South Africa	17	22	28	35	44	51
China	667	818	981	1135	1263	1338
Brazil	72	96	122	150	176	199
India	450	554	697	871	1053	1231

Source: <http://data.worldbank.org/>

Your answer should include the following four elements:

1. DESCRIBE: Describe the patterns you see and any trends that you find particularly noteworthy.
2. CRITIQUE: Consider the strength of the relationships that you can see, and the reliability of the evidence that has been used.
3. EXPLAIN: Suggest explanations for the patterns and trends that you observe.
4. ELABORATE: Consider the wider implications of your observations, both for our understanding of contemporary events and for future trends in carbon dioxide emissions.

You are not restricted to these elements and you do not need to address them in this order.

Write your answer in the space below.

.....

.....

.....

.....

.....

.....

.....

.....

.....

.....

.....

.....

.....

.....

.....

.....

.....

.....

.....

.....

.....

.....

.....

.....

.....

.....

A series of 25 horizontal dotted lines spanning the width of the page, intended for writing.

A series of 25 horizontal dotted lines spanning the width of the page, intended for writing.

A series of horizontal dotted lines for writing.

A series of horizontal dotted lines for writing, consisting of 25 lines spaced evenly down the page.

A series of 25 horizontal dotted lines spanning the width of the page, intended for writing.

This page is intentionally left blank for your rough working or notes.

G